

Dipesh Tailor
Access Team officer
Telephone 020 7282 2096
E-mail dipesh.tailor@orr.gsi.gov.uk



15 August 2017

Gaynor Ramsden
Station and Portfolio Surveyor
Network Rail
By email: Gaynor.Ramsden@networkrail.co.uk

Helen Hodgkinson
Commercial Property Specialist
Merseyrail Electrics 2002 Limited
By email: HHodgkinson@merseyrail.org

Dear Gaynor, Helen

Section 22 Railways Act 1993: Amendments to the Station Access Conditions for Liverpool South Parkway station where Merseyrail Electrics 2002 Limited is the Station Facility Owner, submitted in accordance with the General Approval for stations (2017).

ORR reference number: GAS/22/182/17/04

I acknowledge receipt of the attached amending document, in your email sent 8 August 2017.

I would like to remind you that this submission may later form part of our audit process, as detailed in the guidance note which accompanies the General Approval under which this submission has been made. Our guidance notes can be found at;

<http://www.rail-reg.gov.uk/server/show/nav.223>

Should we audit this submission and discover any suspected misuse of the General Approval, we will contact you and ask that it be rectified. We will also ask you to explain how the misuse occurred.

In the unlikely event that you fail to, or are unable to, rectify the misuse identified, we are likely to withdraw this reference number and this purported amendment will be deemed void.

Yours sincerely

A handwritten signature in black ink, appearing to read 'Dipesh Tailor', is written over a light blue circular stamp.

Dipesh Tailor



AMENDING DOCUMENT

AMENDMENTS WITHIN SCOPE OF GENERAL APPROVALS [AMENDMENTS FOR ORR SPECIFIC APPROVAL]

THE RAILWAYS ACT 1993 SECTION 22

GENERAL APPROVAL FOR STATIONS 2017

Liverpool South Parkway Station (ORR REF : SSA/182/01/06/01.)

Made under the National Station Access Conditions 2013 (England & Wales) and annexes applicable to the station.

1.0 PROPOSALS

To temporarily increase the length of platform 4 at Liverpool South Parkway by 150m at the Manchester bound end from May 2017, the remove the structure in June 2018

2.0 AMENDMENTS REQUIRED

The implementation of the proposals would necessitate changes to the agreements affecting the station as follows:
Station Specific Annexes to the Station Access Conditions –
Liverpool South Parkway Station ORR Ref: SSA/182/01/06/01

Annex 1 - Appendix 2: The plan in Appendix 2 to Annex 1 shall be substituted from May 2017 to June 2018, with plan number 5752828 a copy of the plan is attached to this document.

3.0 AGREEMENT TO AMENDMENTS REQUIRED

[List letters of acceptance here, and attach copies of all correspondence, including objections, to this amending document]

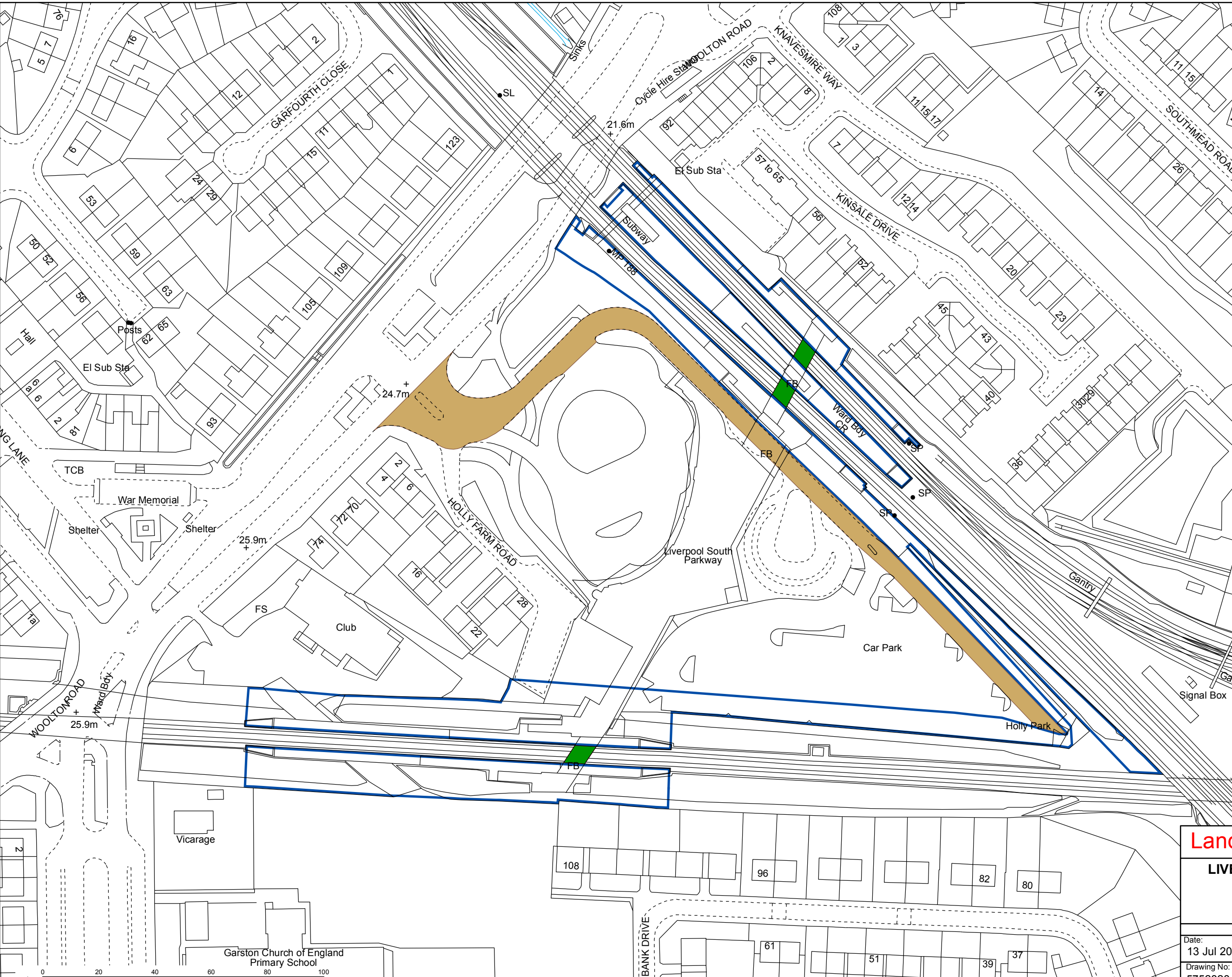
4.0 AGREEMENTS AFFECTED BY THIS AMENDMENT

[List here the station access agreement or agreements affected by this amendment]

5.0 EXCLUSIONS FROM THE PUBLIC REGISTER

No exclusions are requested from this document before placement on the public register.

These amendments are to take effect on completion of the works which are the subject of the proposal.



Landinformation 

LIVERPOOL SOUTH PARKWAY
STATION LEASE

Coordinates \square 340898E 384925N

Date: 13 Jul 2017	Drawn By: James Johnson	
Drawing No: 5752828	Rev: Scale: 1:1250 @ A3	